

TITILAKA

LAKE TITICACA / PERU





Luxury in the cradle of Inca Civilization



LAKE TITIKAKA



The Lodge

Titilaka, a modern all inclusive experience lodge on a remote peninsula on the Peruvian shores of Lake Titicaca, offers a prestigious refuge from which to explore the treasured natural, cultural and historical resources of this mystical region.

Surrounded by stunning scenery and pristine geography, Titilaka's contemporary design and comfort integrates perfectly with the natural environment. The hotel is not only a welcoming lodge full of contemporary comforts and caring services, but a home designed to integrate with the environment and pay homage to the cultures of Lake Titicaca.

Titilaka is also a special place with spectacular views which inspire each visitor to contemplate, explore and enjoy a sense of peaceful solitude and primeval beauty. At 12,500 feet above sea level, we are just that much closer to the sky.

The three-storey lodge offers 18 lake-view rooms facing the Taquile and Amantani islands to the north; the Bolivian Cordillera Real to the East, and Lake Titicaca stretching from East to West. At the northern tip of the peninsula lies the dock, departure point for local and excursion boats.

Titilaka keeps a low carbon footprint. The hotel uses hydroelectric power and natural gas, sources local produce and employs mostly local workers. Interpreters are focused on promoting conservation practices and accentuating local traditions, customs and culture. The hotel actively participates with the local community in various developmental, educational, conservation and social projects. These activities are also available for guests to visit.



Location & Travel times

Surrounded by small hamlets of Quechua and Aymara cultures, visitors often compare the setting with the Scottish highlands or Patagonia. Titilaka is strategically located in a rural community south of Puno, the main city on the Peruvian shore of the lake.

Lake Titicaca is the world's highest navigable lake at 12,500 feet (3,810m) above sea level and covers around 3,200 square miles (8,300 square km). It has a depth of 107 meters and is 50 miles (80 km) wide.

Titilaka can be reached by car and/or by boat, from the Puno Train Station (60 minutes) or by road from the nearest airport at Juliaca (JUL - 120 minutes).

FLY LATAM AND AVIANCA	
LIMA	4 - 110 minutes Flights
CUSCO	1 - 40 minutes Flights
DISTANCES TO TITILAKA:	
From Juliaca Airport 47 Miles (76 km) 120 minutes	
From Puno Train or Bus Station 22 Miles (36 km) 60 minutes	
From the Bolivian Border 78 Miles (126 km) 120 minutes	
TRAIN	
Every Tuesday at 11.00am	
9	hours travel time
21	hours total experience
Transfer to Titilaka on Wednesday at 8:00 am	
SCENIC DRIVE FROM	
Cusco	10 Hours
Bolivian Border	2 Hours
Arequipa	7 Hours
Colca Canyon	7 Hours

Facilities

The lodge is designed as an experience hub to facilitate exploration and maximize exposure to the lake, nature and local life style. All services and facilities were designed accordingly.

- Private peninsula with 4 acres of lands and two private beaches
- 18 fully equipped lake-view rooms
- Outdoor wrap-around terraces, an overwater deck and boardwalks
- Reception, sitting areas, 3 lounges, main dining room and fully stocked bar with large regional wine cellar
- Fully equipped media and reading room with satellite TV, books, games and DVD's
- Small jetty or landing dock
- Massage room
- Boutique, located near the Lobby, offering an eclectic collection of merchandise.



Services

- Nurse available, first aid and oxygen available at all times, fast 40-minute access to a local hospital.
- Massage room available offering various massage and spa services.
- As a child-friendly lodge, activities and excursions are adequate for children. The staff is trained and accustomed to working with children of various ages and nationalities. Bringing babies under 5 years old is not recommended. Cribs and Nanny services are available upon request.
- Full connectivity including international phone service, complimentary wireless internet access (satellite connection) as well as cellphone coverage.
- Personalized services; 24hr room service, fresh cut flowers, three times per day maid service, experince concierge to help orgainze travel arrangements.
- Guests may dine in their room, at the main dinning room, on the terraces or picnic style on outings.
- Cuisine is served by butlers and mixes local ingredients such as Titicaca

lake trout, with Andean-contemporary fusion recipes influenced by awarded Peruvian cuisine and Andean spices. The emphasis is on simple wholesome nutritious food to provide energy for the excursions yet light enough considering the high altitude.

- Guests are offered daily specials and a selection of a la carte options. Full breakfast is served from dawn until noon, including local breads, cheese, fruits and egg options. Lunch and appetizers are served from noon until 3pm, and afternoon tea is offered prior to the excursions. Cocktails and dinner are served from 7pm. Selection of creative snacks offered throughout the day. Sundowners are served in the lounge, on the beach or on the outings.
- Bar service available throughout the day (happy hour from 6:30 p.m. – 7:30 p.m.).

Rooms

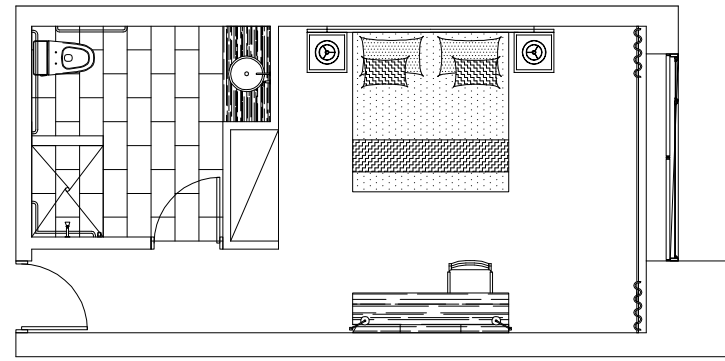
The hotel features eighteen lake-facing rooms with exceptional view which are spread on three levels connected by a central hallway. Each room has an open format, a fully equipped bathroom and contemporary furniture complemented by local textiles and fresh flowers.

Each room is fully equipped with:

- Blackout curtains, centralized lighting, individual reading lamps
- Individually controlled heated floors
- Sumptuous high-quality bedding, individual down duvets and extra pillows
- Fully stocked mini bar
- iPod dock
- Personal safe
- Organic bathroom amenities
- Two telephones
- Coffee table, desk, ample closet space

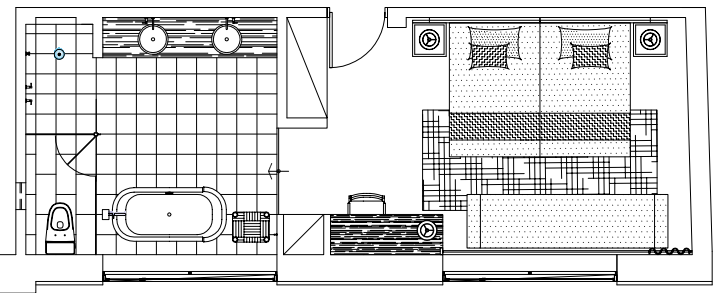
King Room (4) >>>

This homely room has a wonderful lake view that you will never forget. It has heated floors, a divan overlooking the lake, a mini-bar, iPod dock, personal safe, multi-purpose table, black out curtains, mirror, centralized light switches, telephone, desk reading lamps and overhead bed lamps and a coffee table. The bathroom also has heated floors, a twin sink console, large wall and dresser mirrors, a shower, organic bathroom amenities, wall telephone in the toilet, hair dryer and a side-table. One of our King rooms is also equipped for people with disabilities. The King bed measures 2.20 meters wide by 2 meters long. The extra bed is 1.10 meters wide by 1.90 meters long. These rooms are 29 sq m (312 sq ft) in size.



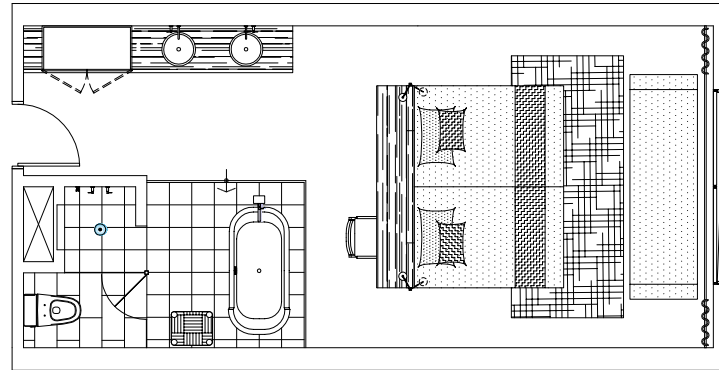
<<< Dusk Room (4)

The Dusk rooms have exceptional views that reveal the imense scale of Lake Titicaca, and allow you to immerse yourself in its ethereal beauty. The modern facilities include heated floors, a divan overlooking the lake, a mini-bar, iPod dock, personal safe, multi-purpose table, blackout curtains, mirror, centralized lighting switches, telephone, desk reading lamps, overhead bed lamps and a coffee table. The bathroom is also equipped with heated floors, a twin sink console, large wall and dresser mirrors, shower with tub, a separate bath tub, organic bathroom amenities, wall telephone in the toilet, hair dryer and a side-table. The double beds are 2.70 meters wide by 1.90 long. The extra bed is 1.10 meters wide by 1.90 meters long. These rooms are 30-40 sq m (310 - 430 sq ft) in size.



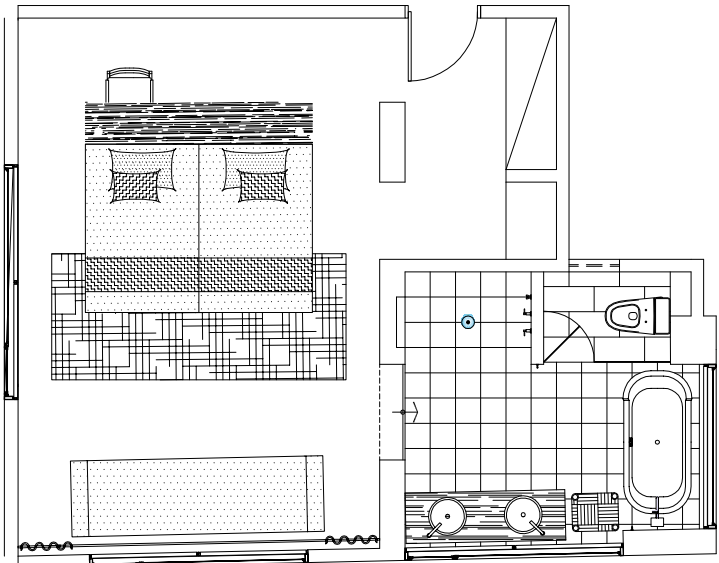
<<< Dawn Room (8)

These rooms have magnificent views of the immense lake, allowing you to fully appreciate its breathtaking beauty. These comfortable rooms are equipped with heated floors, a divan overlooking the lake, a mini-bar, iPod dock, personal safe, multi-purpose table, blackout curtains, mirror, telephone, centralized lighting switches, overhead bed lamps, coffee table, and an electric kettle. The bathroom has heated floors, a twin sink console, large wall and dresser mirrors, shower with tub, a separate bath tub, organic bathroom amenities, a wall telephone in the toilet, hair dryer and a side-table. The King bed is 2.20 meters wide by 2 meters long. The double beds is 2.70 meters wide by 1.90 meters long. The extra bed is 1.10 meters wide by 1.90 meters long. These rooms are 30-40 sq m (310 - 430 sq ft) in size.



Corner Room (2) >>>

The Premium Corner room, with prefevrrd view, is the most popular room category. This room offers views of both sunrise and sunset and spectacular panoramic views of the lake. These comfortable suites are equipped with heated floors, a divan overlooking the lake, mini-bar, iPod dock, personal safe, multi-purpose table, blackout curtains, mirror, telephone, centralized lighting switches, overhead bed lamps and a coffee table. The bathroom also has heated floors, a twin sink console, large wall and dresser mirrors, shower with tub, and a separate bath tub, organic bathroom amenities, a wall telephone in the toilet, hair dryer and a side-table. The double beds are 2.70 meters wide by 1.90 meters long. These rooms are 38-43 sq m (409-463 sq ft) in size.





Excursions

FULL DAY

- Islands of Lake Titicaca
- Aymara route

EN ROUTE EXCURSIONS (to and from the Juliaca airport)

- Lampa
- Sillustani

SHORT EXCURSIONS

- Colonial temples visit
- Colla toute trekking
- Birdwatching
- Marketplace visit (only Saturday and Sundays)
- Local festivities (according to Holiday Calendar)

NEARBY ACTIVITIES

- Boat house- nautical sports
- Cycling Plateria
- Aymara constellation observation
- Rafting through the reeds
- Strolling across the Altiplano

BOLIVIA CROSSINGS (\$ - additional cost)

- Island of the Sun crossing
- Tiahuanaco crossing





FULL DAY EXCURSION

FULL DAY EXCURSION

Islands of lake Titicaca

Explore the Uros floating islands and the Island of Taquile on this full-day trip; one of our most popular excursions. The floating islands of the Uros Titino communities of Lake Titicaca are neither land, sky, or water, but rather at the intersection of the three. Totora or junco reed roots, serve as unique building material.

The Islands of Lake Titicaca excursion brings our guests close to the islands' Uro-Aymara communities. Providing a unique opportunity to grow personally acquainted with the men – skilled reed raftsmen– and women – expert weavers famous for their craft–, our guests will get to know first hand the remarkable heritage and the ancestral techniques used to keep their islands afloat.

In Taquile, for example, guests will experience the Quechua imagination in the textile weavings unique to the area and recently included in UNESCO's Masterpieces of the Oral and Intangible Heritage of Humanity.

Enjoy lunch outdoors as you treat yourself to the grandeur of Puno's deep blue skies mirrored across Lake Titicaca with views of Bolivia's Cordillera Real in the background.

Aymara Route

In the Aymara Route excursion, taking up a whole day, you will get to discover the geography, neighboring communities, nature, and privileged views of the Chucuito peninsula and Acora.

Dive into pre-Incan times, in the legends and stories your guide will tell you all about and learn about Lake Titicaca's importance in the local worldview and means of subsistence. Grow closely acquainted with the unique interconnectedness of man and nature surviving to this day.

Be it by car, by bike or on foot, make your way through the paths pondering through open fields and pastures, reaching the privileged views of natural lookouts and finally enjoying the lake's extensive reach. As part of the excursion, guests will see the lodge's neighboring communities engaging in daily labors, birds in their varying ecosystems, archeological remains, and astonishing landscapes.

Along the way, stop and enjoy your specially prepared lunch in the company of the lake's calm and majestic views.



Excursion to Lampa

On the way to or from the airport, stop and see Lampa, a colonial-period architectural gem and previous Spanish colonial stronghold in the area.

Known as the 'Pink City' for the lively colors of its town walls, Lampa invites travelers to visit its church, old mansions and squares. Renowned in the region for its architecture, the Lampa church is the only local temple built exclusively for the use of Spanish landowners. Explore its mysterious catacombs and impressive replica of Michelangelo's "La Pietà."



Excursion to Sillustani

Perhaps the region's largest and most important pre-Hispanic funeral ground, the archeological complex of Sillustani provides evidence to the area's rich past while offering visitors privileged views of Lake Umayo. Host to a number of chullpas, or ancient funerary tower-like structures, built exclusively to house the remains of nobles and distinguished individuals, Sillustani is among the best kept archaeological sites in the area.

Sillustani provides visitors with a range of chullpas in varying architectural forms resulting from changing time periods and power shifts of peoples like the Pucara, Kolla and Incas. Compare, for example, the pre-Incan towers' rustic appearance and smaller size to the Incan period's larger and more sophisticated chullpas. Made up of rocks weighing between 2 and 6 tons, the largest tower in the complex, known as the Lizard Tower, is estimated to have taken over 50 years to build.

Combining archeology, history, and unforgettable views, Sillustani is a must-see location.



Colonial Temples Visit

Stop and explore the epicenter of the region's evangelizing mission of indigenous peoples during the Spanish conquest in Puno's Juli and Pomata churches, this last one used as a model in the construction of other South-American colonial-period temples. Located between Cuzco and the historic mining town of Potosí, these religious centers are at the intersection of millenary cultural legacies, the mining rush, and the clash of faiths.

As the evangelizing fervor spread and competition for followers and acknowledgment grew fiercer in the region, six churches were built by request of rival Catholic congregations. Harboring the construction of four churches in the XVI and XVII centuries, the town of Juli came to be known as the "Little Rome of America," while Pomata grew famous for its baroque church, built entirely out of red pumice stone, or piedra pómez roja.

The churches display impressive architecture, including gold leaf altars as well as notable paintings of the vice regal period and large bells which can still be heard to this day. Recently restored, the churches offer a journey into the past, one you'll be able to enjoy peacefully, seeing as travelers rarely make it here. On your way back, you'll see the mysterious Aramu Muru, or Wilka Uta portal, a human-sized rectangular frame carved into a massive red rock, similar to sandstone. The mystical Aramu Muru was previously used as a holy site for rituals to the Sun god or Inti during the time of the Incas.



Colla Route Trek

The Colla Route, part of the original network of Incan roadways, runs through the rocky mountain area near the lodge. Leaving early in the morning, the traveler has numerous route options to choose from along the Colla Route or up to the Titilaka Archway. While walking, you'll be able to enjoy views of the area and Bolivia's impressive Cordillera Real or Royal Mountain Range.

Continue onto the Hilarata Summit and you will be rewarded with amazing views of Lake Titicaca and the Altiplano below where the Santa Rosa and Thunuhuaya communities are located. Finally Lagoon Chatuma, where locals still hold rituals and ceremonies to this day, will surprise you with its beauty.



Birdwatching

Accompanied by our specialized guides, you'll learn to detect, identify, and even mimic bird songs as you attempt to connect with native species. As part of the excursion, you'll visit different ecosystems where you'll be able to find a wide range of local birds, especially in the protected wetland area near the lodge.

A member of the RAMSAR Convention on wildlife, this neighboring protection site is home to 103 species of migratory and residential birds, several of which are only native to this area. Leaving early in the morning or late in the afternoon, you'll find birds leaving for breakfast or returning home for a night's rest. Some species are highly recognizable by their colorful feathers while others are harder to spot in the opaque and subdued tones of their plumages, a protective measure to ensure camouflage from enemies. Depending on the season, you'll be able to see flamingos and great crested grebes, among many other species.



Marketplace Visit

(ONLY SATURDAYS AND SUNDAYS)

The people of the Peruvian Altiplano are faithful to many historic traditions, among them, bartering or trading as a main form of payment and commerce. Sundays are typically the day to trade agricultural products. You'll see a colorful display and an immense variety of potatoes, quinoa, chuño, among other local goods not seen elsewhere.

Receiving locals from Lake Titicaca, neighboring areas, as well as foreign visitors, the Marketplace Visit offers a unique opportunity to participate in the lively shopping experience of the local people. Enjoy in this lively dynamic as you peruse the unique species in your trip to the market.

Local Festivities

(ACCORDING TO HOLIDAY CALENDAR)

Known as the Peruvian Capital of Folklore, Puno is host to some of the region's most renowned traditional festivals. Among the most celebrated and popular is the feast of the Virgin of la Candelaria, declared Intangible and Cultural Patrimony of Humanity by UNESCO boasting over 360 pre- and post-colonial dances. Weaving together a unique version of local history, this festival is held each February and gathers around 40,000 people. Storming Puno's streets with vibrant dance and lively traditional wear made solely for the celebration, the Virgin of la Candelaria is the region's most representative celebration.

Titilaka has identified 12 local feasts near the lodge, and if your stay with us coincides with any of them, our guides will gladly assist you in enjoying these. Be among the few travelers who have experienced these typical Peruvian traditions.



NEARBY ACTIVITIES



Boat House – Nautical Sports

The first nautical sports facility on Lake Titicaca, our boat house offers you the exclusive opportunity to sail at more than 12,000 feet above sea level. Choose among kayaks, Canadian canoes, paddle boards, and sunfish sailboats, or try them all as you explore this wonderful body of water.

Experienced Titilaka instructors are at hand to look over your safety and explain navigation procedures before you begin your nautical journey. Explore the lake at your pace while enjoying the serenity of its views and silence. Discover the nearby ecosystems strewn among its shores and Totoras reeds, an ideal location to observe local wildlife and plants making Titicaca their home.

Don't miss views of the lodge as you make your way through the lake and look forward to snacks and refreshing beverages on our outdoor terrace once you're ready to head back.



Cycling Platería

Undoubtedly one of our most memorable journeys, cycling through the fields of Platería offers unforgettable scenery as you explore outdoors under Puno's blue sky.

Crossing varying terrain, you'll follow rural paths along the lakeshore where you will see locals participating in their daily activities, possibly in traditional wear. Be it farming the earth with old-fashioned tools, or employing old school means of transportation like a donkey for Totoras reed gathering, locals can be seen working in the company of their playing children.

Enjoy the freedom and fresh air in this engaging activity where you set the pace and direction.



NEARBY ACTIVITIES



Aymara Constellation Observation

Puno's clear skies and the Altiplano's serenity make the lake's environment a perfect place for astronomical observations. Layer up before stepping outside to our lodge gardens where your guide will explain the movement of stars and locate constellations such as the Warawara Hawira (Milky Way).

Learn about the religious beliefs of the Andean societies and the duality between the sun and moon serving as origin of the world and cosmic order. Get to know the legends and stories passed down from generations from ancestral time to this day.



Rafting through the Reeds

Allow our guides to gently lead you on a raft through masses of Totoras reed near the lodge as you learn more about this local hydrophilic plant species. Explore the lake's ecosystem and learn about the close relationship existing between the peoples inhabiting the lake and its natural resources.

Used in a number of ways, Totoras reed is part of the local diet as well as a construction material for housing. The distribution system is similar to the one used for property or land, with reed distributed among locals for harvesting.

This nutritious reed also provides a special ecosystem for birds such as the goldcrest, flightless grebe, moorhen and heron.



NEARBY ACTIVITIES



Strolling Across the Altiplano

Consider the magnificent views, hues, and impressive Andean geography while you walk along rural paths near Titilaka. Visit a local community and learn more about the traditions and practices of Andean life in the Peruvian Altiplano. Observe local agricultural and fishing practices, an essential part of the daily routine.



BOLIVIA CROSSING (Additional Cost)



Island of the Sun Crossing

Operated by a company with years of experience providing unforgettable experiences, this full-day excursion provides visits to the legendary Island of the Sun, origin of the Incan empire, and lunch in nearby Bolivia.

Head south to the border with Bolivia and reach the Sanctuary of Copacabana's cathedral and main square before boarding a catamaran. This vessel will transport you to the Island of the Sun, where you'll visit the archaeological complex of Intihuatana, a center for traditional medicine, and the Totora reed raft makers from central Titicaca.

You'll also be able to see Incan farming terraces carved into the mountainside, the center for traditional clay craft-making, and the Intica Hall, where you'll see a variety of Andean camelids.

To finish, you'll board a boat that will provide panoramic views of the Pilikokaina Incan palace, before heading back to Copacabana and the comforts of your hotel.



Tiahuanaco Crossing

The Tiahuanaco Crossing is a full day excursion managed by a third party which will take you across the Bolivian border to the famous Sun Gate, unique to the Tiahuanaco culture.

Considered the cradle of all South American civilizations, the Tiahuanaco culture offers pre-Incan edifices dating as far back as 1580 AC. After visiting the citadel, continue on to the local museum which hosts ancient objects as well as original tools from the pre-Incan cultures that once inhabited the area

During this excursion you'll be able to enjoy lunch in neighboring Bolivia.





Responsible Travel

At Titilaka, all of us understand the need for responsible travel and are deeply committed to both minimizing our ecological footprint and being the best possible neighbour we can to the local communities that have welcomed both us and our guests with open arms.

CALTUR is the Peruvian government certification for tourism quality, which incorporates both environmental and social standards; Titilaka has qualified every year. On this page we detail what we do to achieve these two core goals.

SOCIAL COMMITMENT

Titilaka's social commitment is focussed on supporting the sustainable economic development of the villages around the lodge. Starting by offering local community members a stable, well-paid job that is all too rare in this part of the world, these jobs complement their traditional lifestyle focused on small-scale agriculture. Three-quarters of our staff come from local communities and

we source ingredients locally as much as possible, providing the families with an important market for their products, from food crops to Andean textiles.

Titilaka also works hand in hand with a non-profit organization that supports the communities around the lake. We make a donation on behalf of every guest. Guests will also have a chance to give back personally by making their own donation or visiting a local village. Additionally, we are in the process of starting up our own foundation and have already begun working on the following projects that will eventually be channeled through that foundation:

- Titilaka has funded and organized a weaving project, including workshops by Klaud, a Lima-based fashion company that promotes new methods to use the traditional Andean textiles. More than 50 locals have already participated in the free workshops allowing them to use their ancestral skills to create contemporary products and generate a new income.

- We also support the local school by, for example, funding an English teacher and offering workshops and lecture series to improve vocal skills. We will eventually be offering internships at Titilaka.
- Finally, Titilaka helps our neighboring communities to advance technologically by identifying their needs and then helping them with the implementation, from potable water to WiFi.

ENVIRONMENTAL SUSTAINABILITY

Respecting the natural environment is central to Titilaka's mission and we have a deep commitment to sustainability. Our lodge inherently has a small ecological footprint. Nevertheless, we take the follow measures to reduce it even further:

- We separate all our trash to recycle as much as possible. By doing so, we also hope to encourage our suppliers, contractors, and neighbouring communities to also adopt this important practice.
- We recycle used water from Titilaka for irrigation around the lodge.
- Our staff also cleans up the area around the lodge, including local lake beaches.
- We source local ingredients as much as possible, thus minimizing the food miles of the meals we serve.

TITILAKA

LAKE TITICACA / PERU

TITILAKA.PE